

# A WASTE RESEARCH, DEVELOPMENT AND INNOVATION (RDI) ROADMAP FOR SOUTH AFRICA (2015-2025)

## TOWARDS A SECONDARY RESOURCES ECONOMY



**Henry Roman (PhD)**  
Industry meets Science Workshop

8 March 2016



science  
& technology

Department:  
Science and Technology  
REPUBLIC OF SOUTH AFRICA

# Background and approach

- 2013 the DST embarked on a process to develop a **strategic approach** to RDI in the waste sector
- To support South Africa's move away from landfilling towards alternative options through innovation
- While SA has embraced the principles of the **waste hierarchy** in legislation
- Still landfill ~90% of all waste generated
- Significant **opportunity** for RDI to fast-track a move away from landfilling towards alternatives



# The Waste RDI Roadmap

- The **vision** of the Waste RDI Roadmap is to stimulate –



- Through the **investment in science and technology**

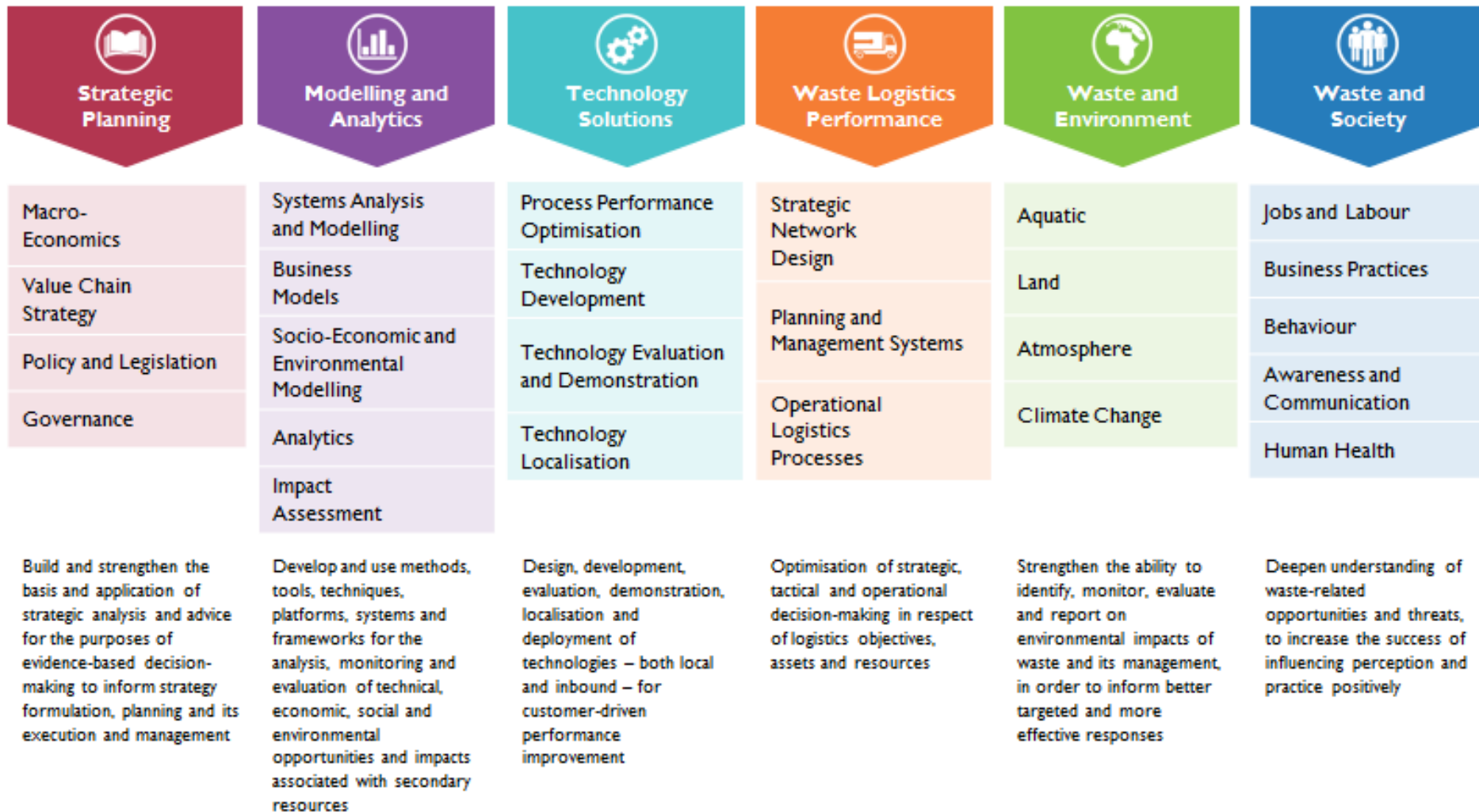


# Waste RDI Outcomes

- Vision** *Development and deployment of performance improvements in waste management has delivered a significant contribution to the strengthening of a sustainable regional secondary resources economy in South Africa.*
- Mission** This has been achieved by means of a **National Waste RDI Programme** that supports maximisation of diversion of waste from landfill towards value-adding opportunities, including prevention of waste and the optimised extraction of value from reuse, recycling and recovery, in order to create significant economic, social and environmental benefit.
- Means** The underpinning contribution of RDI to strengthening South Africa's secondary resources economy is focused on four key Enablers:
1. More effective decision-making
  2. Faster insertion of context-appropriate Technology
  3. Export of Know-How and Technology
  4. Strengthened RDI capability and capacity

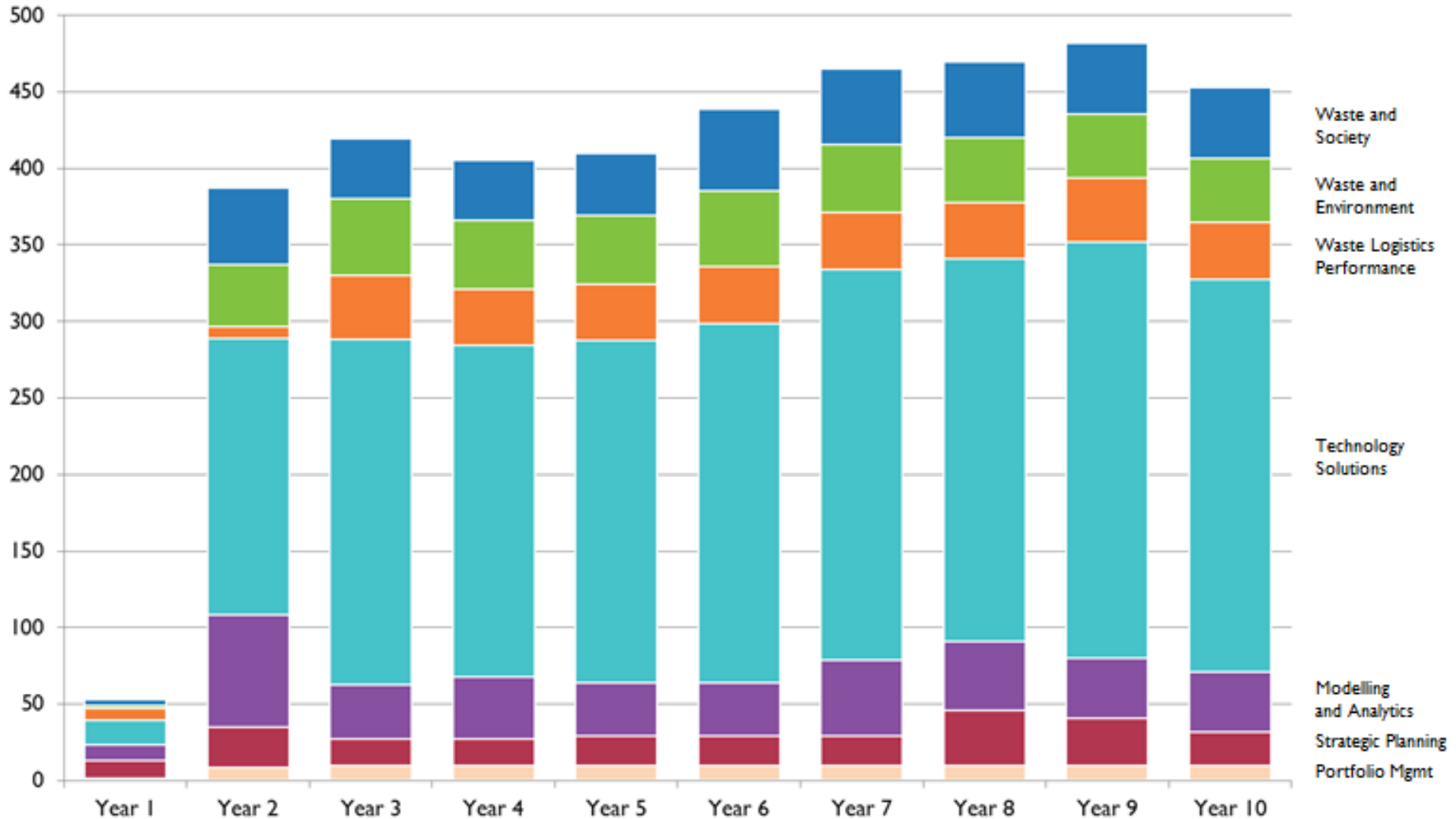
# Towards an Implementation Framework

## RDI Clusters defined



# Investment in Waste RDI

Per cluster, per year, in ZARm





# Contact details

- **Dr Henry Roman**  
Director: Environmental Services and Technologies  
E-mail: [henry.roman@dst.gov.za](mailto:henry.roman@dst.gov.za)
- **Ms Magamase Mange**  
Deputy Director: Environmental Technologies  
E-mail: [magamase.mange@dst.gov.za](mailto:magamase.mange@dst.gov.za)

[www.wasteroadmap.co.za](http://www.wasteroadmap.co.za)



## Waste RDI Roadmap

Outlines the proposed interventions, progression paths and the related instruments, and the required RDI investment over time



## Trends

Describes the local and global trends in waste management and approach adopted in arriving at the priority waste streams for the Roadmap



## Capabilities

Maps the nature, availability and maturity of waste RDI capability and capacity in South Africa



## Opportunities

Provides an overview of the Market Opportunities we see, how attractive they are and what is required to realise them