

10-YEAR WASTE RDI ROADMAP FOR SOUTH AFRICA (2015-2025)

Industry-meets-Science Workshop on Food Waste



Dr Henry Roman

**Director: Environmental Services & Technologies
Department of Science and Technology**

**Industry-meets-Science Workshop
15 February 2017**



**science
& technology**

Department:
Science and Technology
REPUBLIC OF SOUTH AFRICA



Purpose of ImS Workshop

- The aim of this Industry-meets-Science workshop is –
 - To bring industry and academia together – to make sure that South Africa’s research **remains relevant** and that research finds **uptake**
 - To create a **knowledge sharing and leadership platform** to share and learn
 - To highlight the **challenges** facing the sector that can **inform** direct research
 - To **showcase current research** and **solutions** that may benefit industry/business; and
 - To jointly **identify priority actions** and **research needs** to support reduced food waste as we move forward.

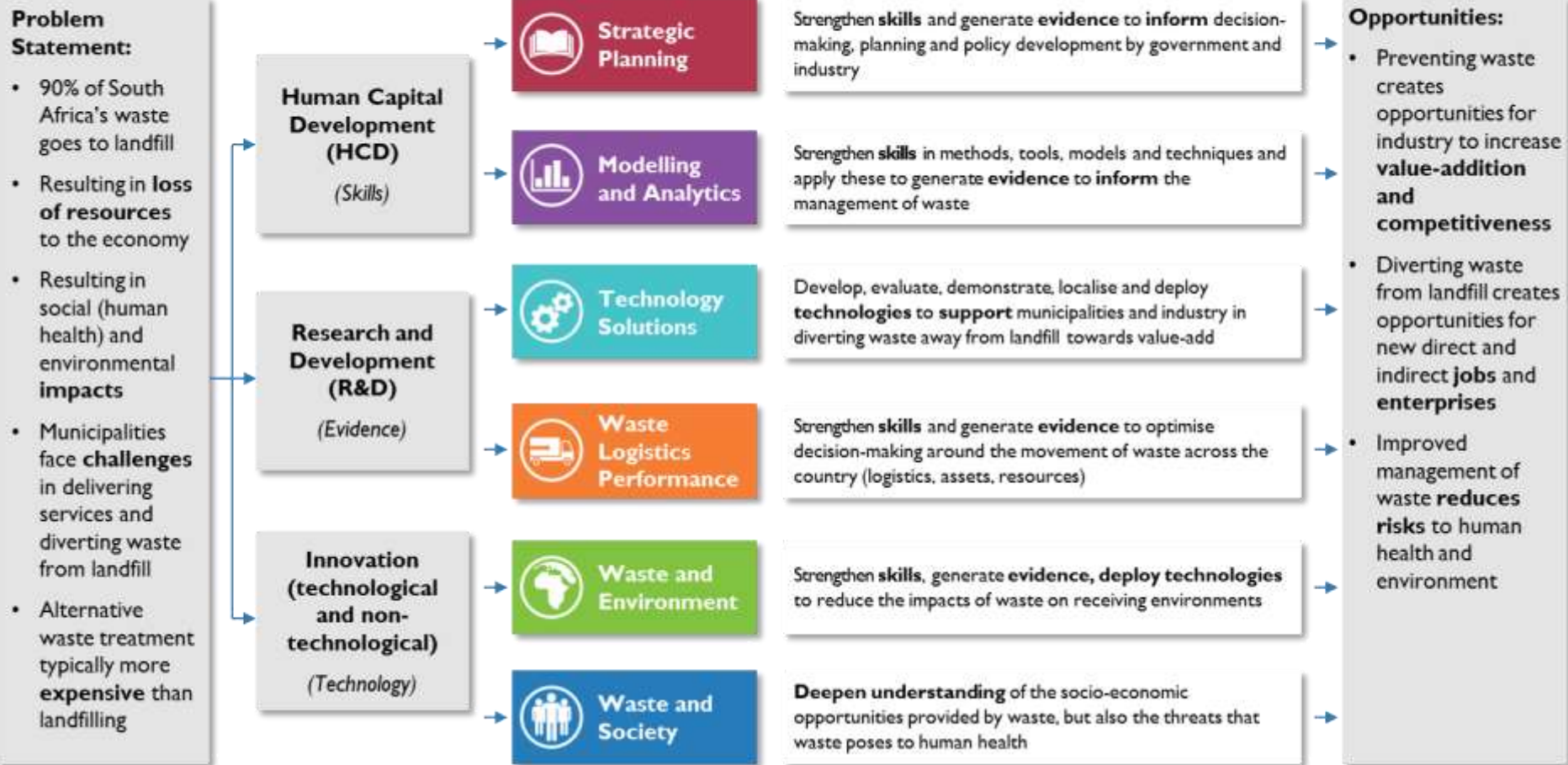
The Waste RDI Roadmap

- The **Industry-meets-Science** workshop series is an initiative of the South African Waste Research, Development and Innovation (RDI) **Roadmap** (2015-2025)
- A **strategic framework** aimed at guiding South Africa's **research** and research **investment** in the waste sector
- Initiated by the **Department of Science and Technology** in 2013
- The Roadmap aims to support South Africa's move away from landfilling towards **alternative options** through R&D and innovation



Framework of the Waste RDI Roadmap

Problem — Means — How — Opportunities



Priority Waste Streams of the Roadmap



- **Municipal Solid Waste**

e.g. paper and packaging, C&D waste, OFMSW, residual waste



- **Electronic Waste (WEEE)**

e.g. all fractions, metal, plastic, glass, etc.



- **Waste Plastic**

e.g. pre- and post-consumer plastics (all)



- **Organic Waste**

e.g. industrial biomass, OFMSW, food waste



- **Waste tyres**

Maximising the diversion of waste away from landfill towards value-adding opportunities, including prevention of waste and the optimised extraction of value from reuse, recycling and recovery, in order to create significant social, economic, and environmental benefit for South Africa.

Contact details

- **Prof Linda Godfrey**
Manager: Waste Roadmap PMU
E-mail: LGodfrey@csir.co.za
- **Dr Henry Roman**
Director: Environmental Services and Technologies
E-mail: henry.roman@dst.gov.za
- **Ms Magamase Mange**
Deputy Director: Environmental Technologies
E-mail: magamase.mange@dst.gov.za

www.wasteroadmap.co.za



Waste RDI Roadmap

Outlines the proposed interventions, progression paths and the related instruments, and the required RDI investment over time



Trends

Describes the local and global trends in waste management and approach adopted in arriving at the priority waste streams for the Roadmap



Capabilities

Maps the nature, availability and maturity of waste RDI capability and capacity in South Africa



Opportunities

Provides an overview of the Market Opportunities we see, how attractive they are and what is required to realise them